

Guildtown 2036

14 June 2022

Welcome and Icebreaker

1. Introduce your self to someone you don't know
2. Tell them where you live
3. How long have you / they lived here?

Welcome and Icebreaker

Whole Group Discussion

1. **Where do you work/volunteer? (postcode / address) (Flip chart)**
2. **Are you working from home often? (Show of hands)**
3. **Where do you do your big shop? (Shout out)**

Scene Setting: Scone Estate



REWIND
SCOTLAND, 22-24 JUL, SCONE PALACE

10TH ANNIVERSARY

SATURDAY

HEADLINED BY **HOLLY JOHNSON**

BILLY OCEAN
THE **TREVOR HORN** BAND
NIK KERSHAW
THE **CHRISTIANS**

ROLAND GIFT
FINE YOUNG GARNISHALS
HUE & CRY
ALTERED IMAGES

QUEEN SYMPHONIC
HEAVEN 17
T'PAU
PRESENTED BY THE DOCTOR

SUNDAY

HEADLINED BY

THOMPSON TWINS

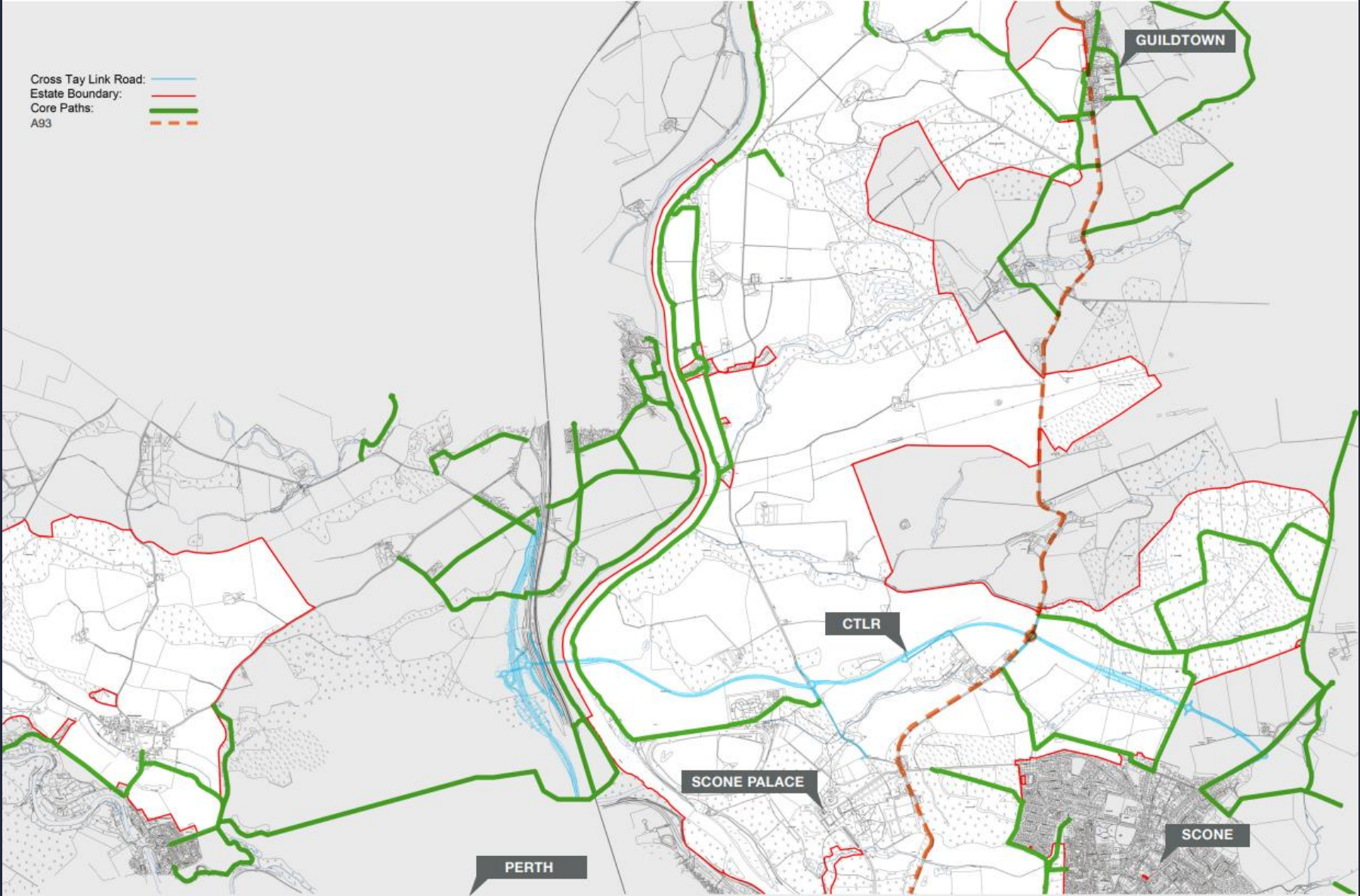
Scene Setting : PKC Local Development Plan 3 - Proposed Timetable

- Initial discussions / commencement of engagement: September 2022
- Preparation of Evidence Report: through 2023
- Preparation of/consultation on Proposed Plan: 2024
- Adoption of Proposed Plan: 2026

*these timescales are subject to change.



Scene Setting: Cross Tay Link Road :



Guildtown and Scone:



Guildtown and Scone: Initial Meeting and formation of Contact Group:

Sheelagh Candy - Hall & Playing Fields Assoc (Community Group)

Ryan Mollison - Anglers Inn

Morag Hood - Flutterby Community Group

Alistair Cameron - Bloom Community Group

Jenny Graham - Biodiversity Community Group

Ellen Simpson - Friendship Community Group

Catherine Smith - Parent

Eleanor Ketley - Parent

Barry and Heather Jeffrey - Local residents

Krystle Comer-Smith - Football Club

Louise or Mike Hendry - Garage

Guildtown and Scone: Discussion Day



Guildtown 2036

Scone Estate would like to invite you to discuss the future of Guildtown



Guildtown 2036

Perth and Kinross Council will soon be reviewing its Local Development Plan (LDP) which will plan for the future of communities throughout the area for a 10 year period. Once the Cross Tay Link Road is in place this may open new opportunities for Guildtown and the surrounding areas.

Scone Estate is considering how its land might contribute to the future of Guildtown.

We would like to discuss with you the long-term use of Scone's land to the west of the village and to understand the future needs of the community.

We are keen to hear from as many residents and businesses as possible so we are hosting an initial series of discussion sessions

Discussion Sessions Tuesday 14 June 2022

(Each session will cover the same subjects and last for approximately 90 minutes)

9.30 am	Anglers Inn, Guildtown
2.30 pm	Anglers Inn, Guildtown
6.30 pm	Village Hall, Guildtown

Event Information will be available on:

- Village Noticeboard on Main Road
- Scone Estate Website: <https://www.scone-estates.co.uk>
- Guildtown Website: <https://www.guildtown.org.uk/guildtown>
- "Guildtown Noticeboard" Facebook page
- Email queries to Guildtown@savills.com



Guildtown Today: Discussion on Guildtown's assets and facilities. Write on sheets.

1. How long has everyone lived in Guildtown? (Write down the years)
2. What was it like in (use the earliest year)?
3. What facilities did it have then?
4. What do you love most about living in Guildtown?
5. What would make it an even better place to live?
6. What facilities would you miss most if they closed?

Write on paper on tables

Report Back: One person from each table to tell us one or two key points

Cross Tay Link Road



<https://www.perthtransportfutures.co.uk/>

Cross Tay Link Road: Discussion

1. What could the CTRLR mean for you and your family and your business? e.g. Travelling to work, school, shopping etc.
2. What could the CTRLR mean for Guildtown?
Opportunities? Challenges?

Write on paper on tables

Report Back: One person from each table to tell us one or two key points

Scone Palace Plans



Scone Estate Masterplan

SCONE PALACE, PERTH, PH2 6BD
by 3DReid Architects, May 2022

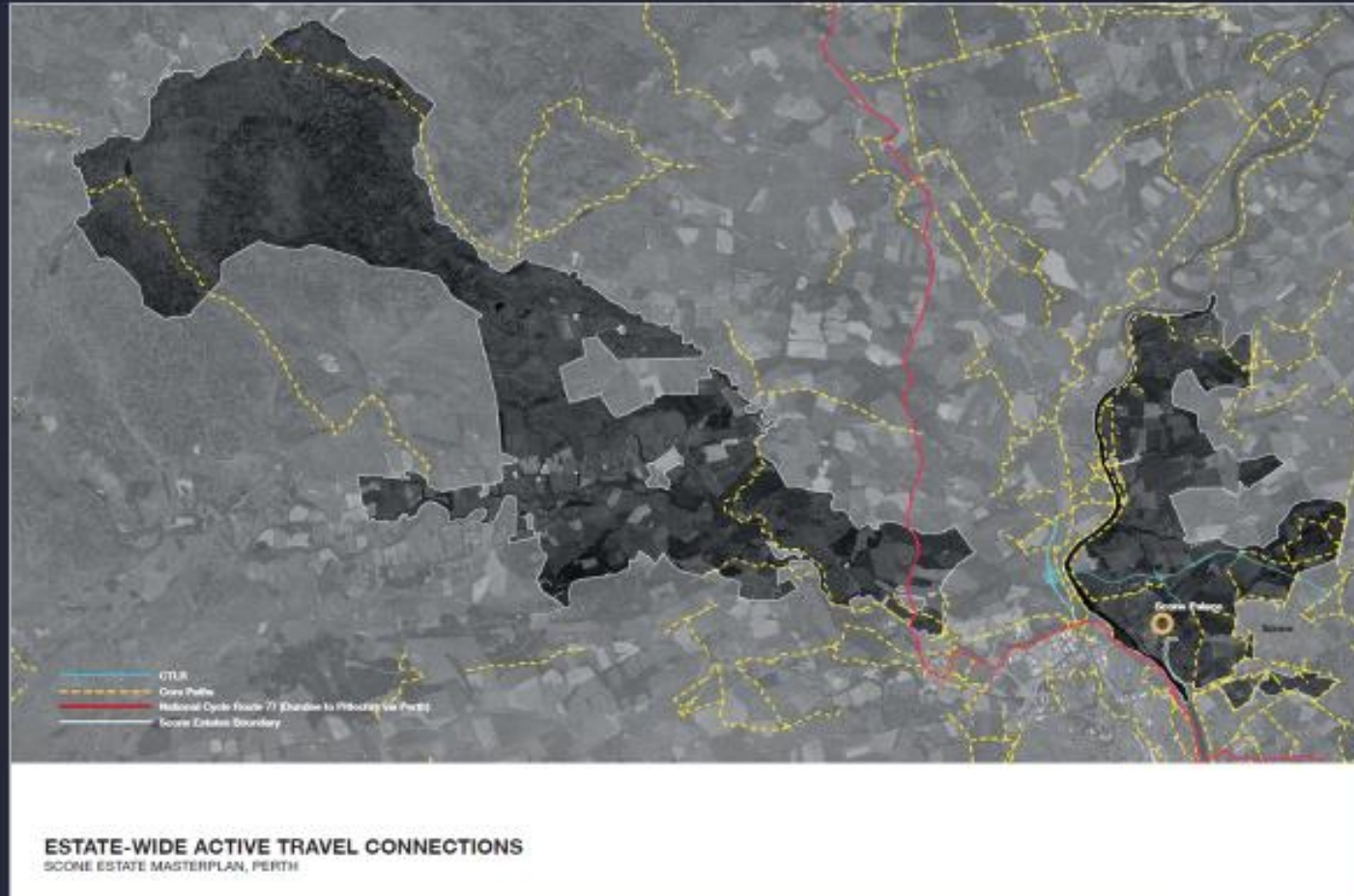


Scone Estate



A Connected Network of Communities

Wider Travel Connections

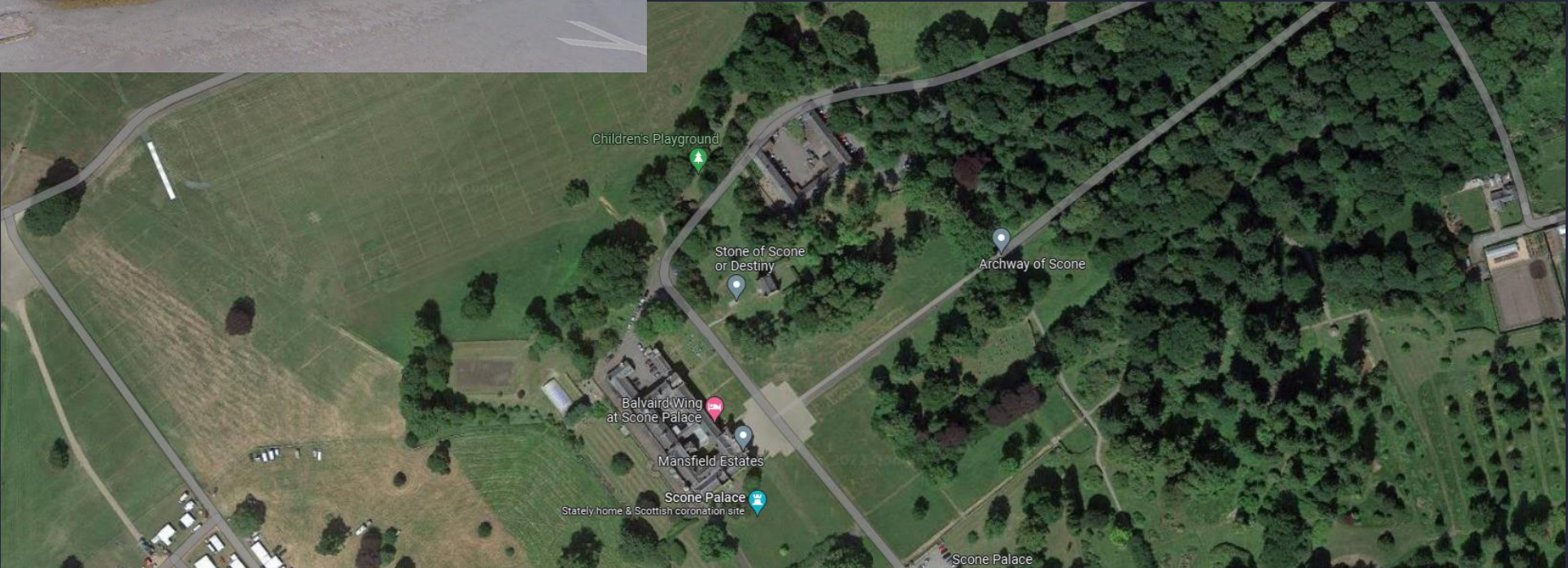


Scone Place Plans



SCONE PALACE - THE ARRIVAL
SCONE ESTATE MASTERPLAN, PERTH

Scone Palace New Visitor Centre



Scone Palace New Visitor Centre



VISITOR ARRIVAL - CONVERSION OF EXISTING STABLES TO VISITOR CENTRE
SCONE ESTATE MASTERPLAN, PERTH

Scone Palace New Visitor Centre



VISITOR ARRIVAL - NEW CARPARK, CHARGING POINTS AND BIKE HIRE
SCONE ESTATE MASTERPLAN, PERTH

Score: Balboughty Steading – Workshops? Business Hub?



BALBOUGHTY FARM - PROPOSED REFURBISHED WORKSHOPS, SKETCH VIEW NORTH
SCONE ESTATE MASTERPLAN, PERTH



Discussion

What are your first impressions about Scone Estate's Plans?

Path Networks

Palace Visitor Centre

Balboughty Business Hub



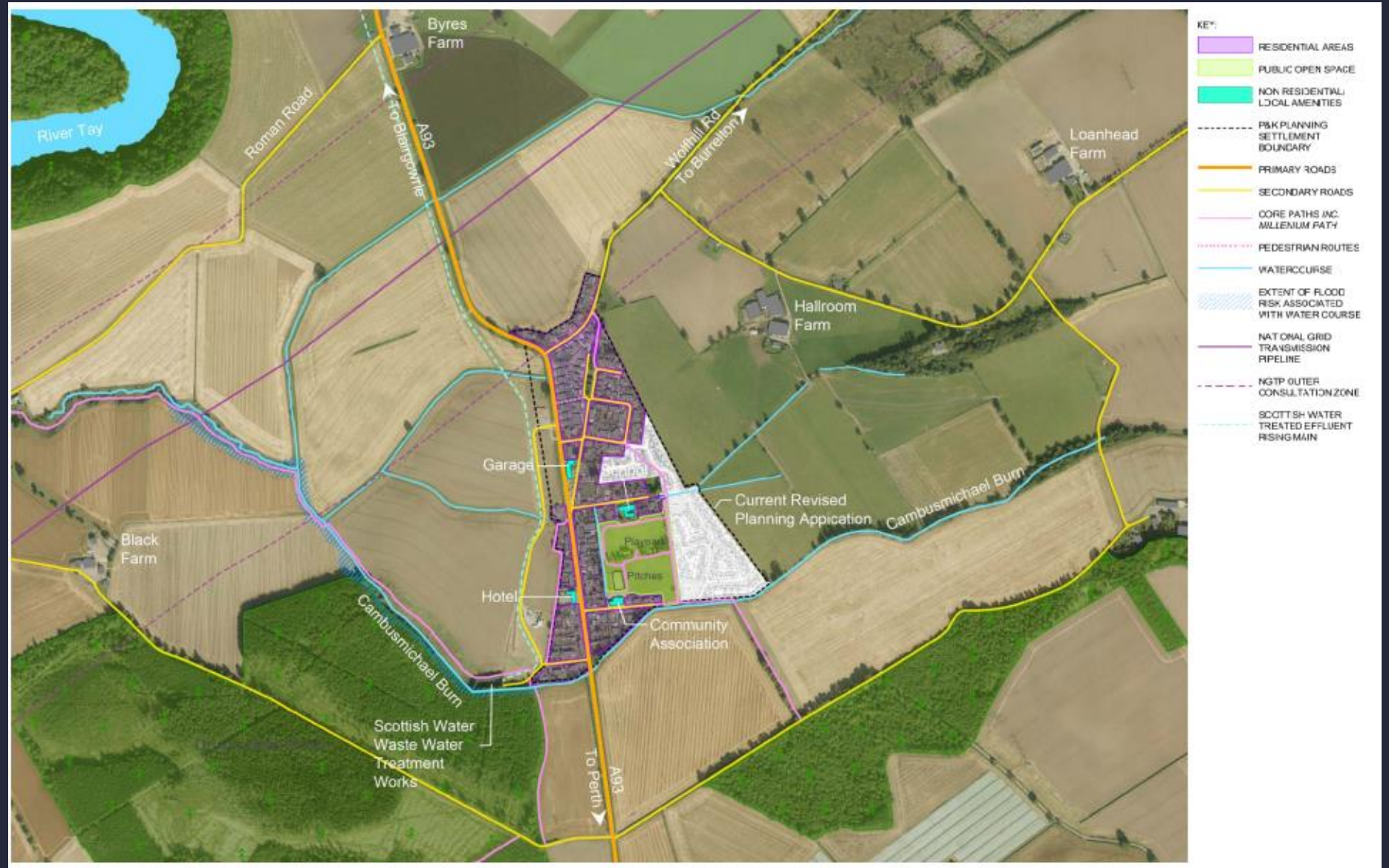
**Look out for
Consultation!**

A Connected Network of Communities



CONNECTED NETWORK OF COMMUNITIES
SCONE ESTATE MASTERPLAN, PERTH

Guildtown:



Discussion

What does Guildtown need to make it a more successful place for the future?

Businesses

Housing

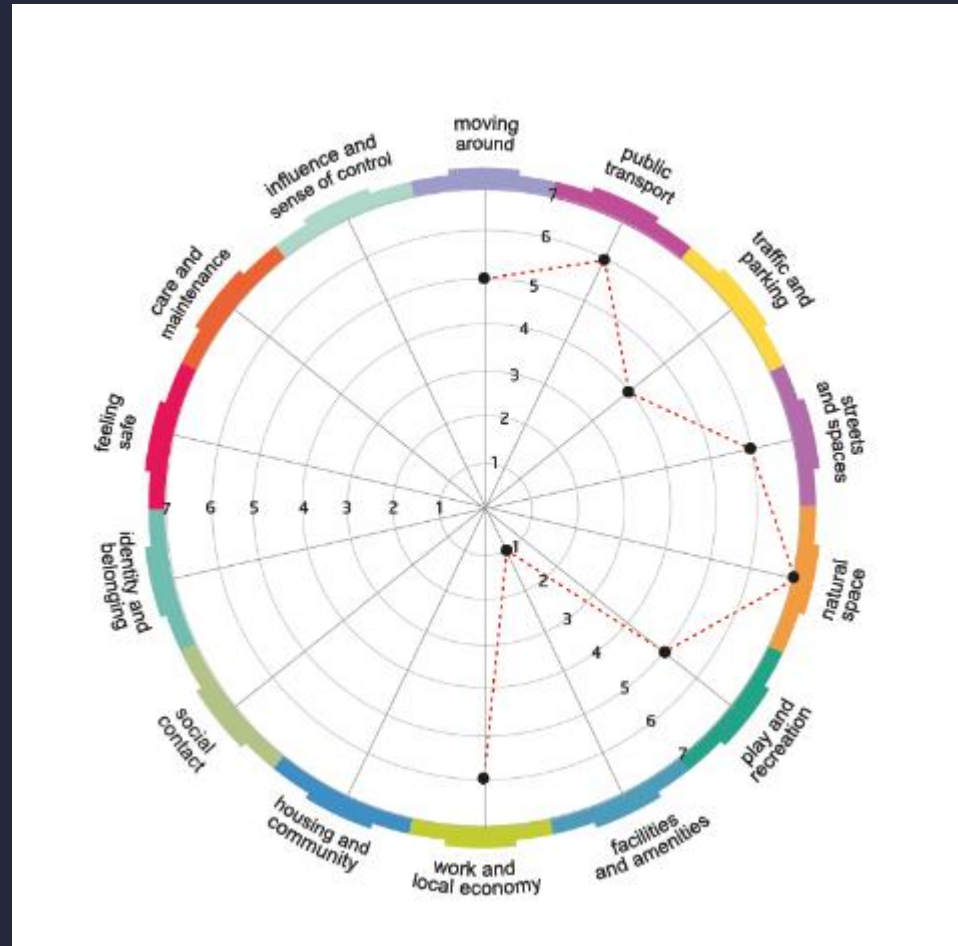
Leisure

Tourism

Education

Other...

Place Standard



Next Steps

Are we reaching everyone?

Question and Comment Box



Event Information will be available on:

- Village Noticeboard on Main Road
- Scone Estate Website: <https://www.scone-estates.co.uk>
- Guildtown Website: <https://www.guildtown.org.uk/guildtown>
- "Guildtown Noticeboard" Facebook page
- Email queries to Guildtown@savills.com

Next Steps

Online Place Standard

Connecting with younger people

Considering the key messages

Report back and plan ahead

Thank you!!